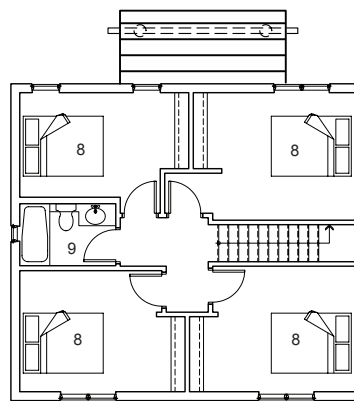
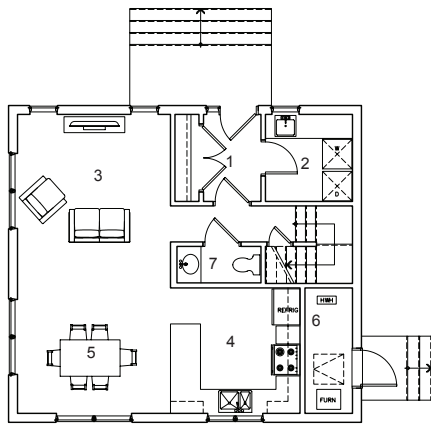


Lot 22 House Naughton, ON

Atikameksheng Anishnawbek First Nation



- 1 ENTRY
- 2 LAUNDRY
- 3 LIVING
- 4 KITCHEN
- 5 DINING
- 6 UTILITY
- 7 POWDER ROOM
- 8 BEDROOM
- 9 BATHROOM

This one storey, 3 bedroom single family dwelling is located on the rocky outcrops of the Canadian Shield in northern Ontario. Including features such as an air-lock vestibule, a protected front entry porch, exterior access to the utility room, a sloping ceiling through the common space to allow for natural ventilation, the house also features south facing common spaces and windows for larger family gatherings. The use of durable interior and exterior materials such as galvalume roofing, pre-finished wood siding, and Durisol foundations is complemented by the use of local wood elements to help reinforce the traditional culture.

AREA 1,258 sf
BUDGET Withheld
STATUS Tender

LaPointe

ARCHITECTS

www.lapointe-arch.com



Atikameksheng
Anishnawbek