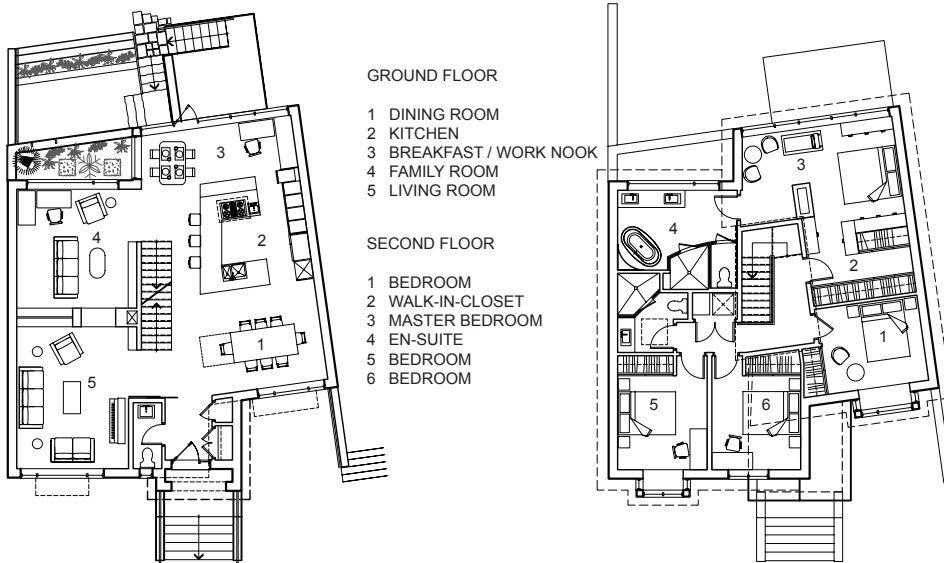
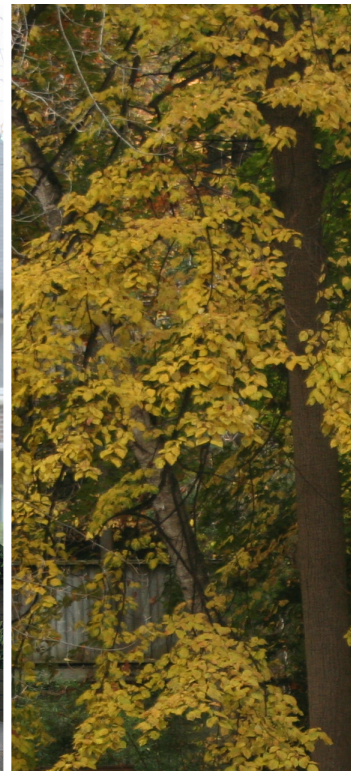


Ravine House Toronto, ON

The Beaches



This infill housing project in the Beach neighbourhood seeks to create a modern home for a couple with a large extended family. Developed in conjunction with The Holmes Group, this sustainable house exceeds rigid indoor air quality standards. The facade mimics the neighborhood's traditional neo-Tudor architecture while the contemporary interior focuses views on the adjoining ravine.

AREA	2,608 sf
BUDGET	Withheld
STATUS	Construction Fall 2011
PROJECT MANAGER	The Holmes Group