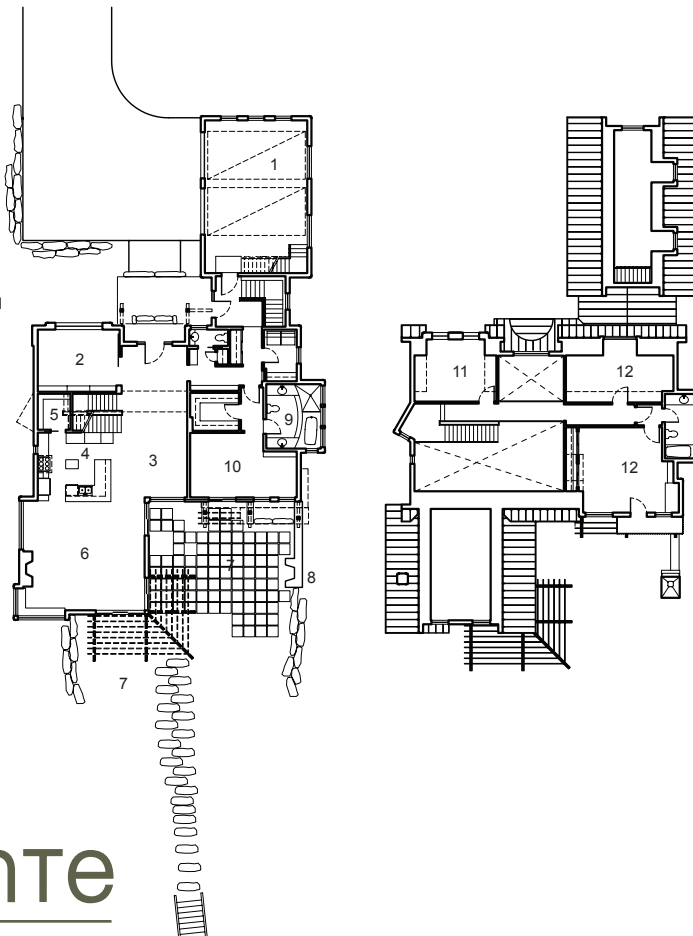


# Skiff Cove House Wellington, ON



**GROUND FLOOR:**

- 1 GARAGE
- 2 ENTERTAINMENT
- 3 DINING
- 4 KITCHEN
- 5 PANTRY
- 6 LIVING
- 7 OUTDOOR LIVING
- 8 FIREPLACE
- 9 ENSUITE BATHROOM
- 10 BEDROOM
- 11 OFFICE
- 12 GUEST BEDROOM



Set on a suburban lot adjacent to 18 ft high limestone cliffs, this 3,200 sf 'green' house focuses views south to Lake Ontario and the sand dunes of Sandbanks Provincial Park. A glazed sunroom complete with vaulted ceilings provides shelter for the south facing courtyard, defined on the east by an outdoor fireplace. Materials include stone, wood siding and Galvalume roof, accented by a reclaimed timber pergola. Heating and cooling will be provided by a geothermal heat pump, utilizing the thermal mass of Lake Ontario.

**AREA** 3,200 sf  
**BUDGET** Withheld  
**STATUS** Completed 2010