

Melrose Avenue House Toronto, ON

Bedford Park-Nortown



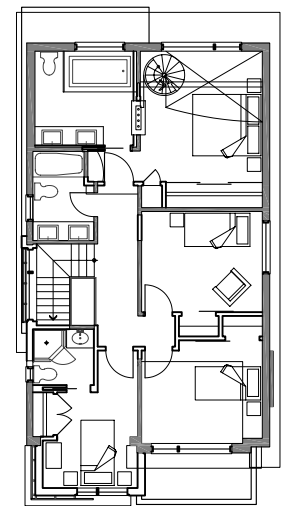
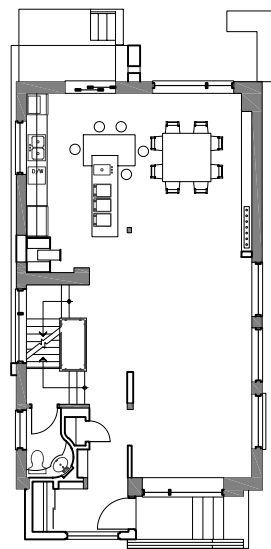
Before



Proposed

This project consists primarily of a new front yard addition to accommodate an entry vestibule on the ground floor and an expanded bedroom on the second floor. Additionally, a new mezzanine was added to the master bedroom to reduce the unusually high space and to accommodate a steam shower. Finally, washrooms and the kitchen are being updated. The exterior work consist primarily of an updating of the exterior features of the house.

AREA *addition: 231 sf, total: 2117 sf*
BUDGET *Withheld*
STATUS *Completed 2011*



■ EXISTING CONSTRUCTION