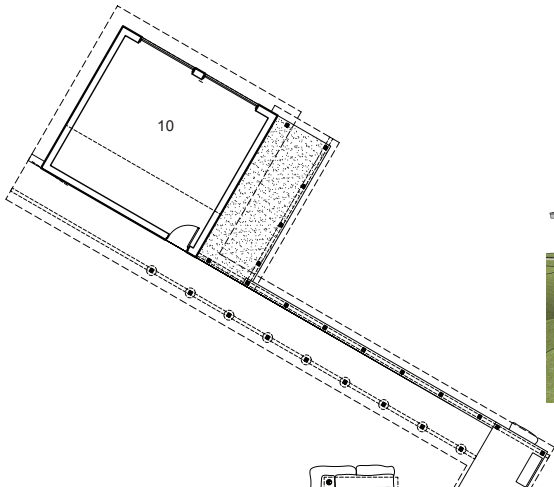
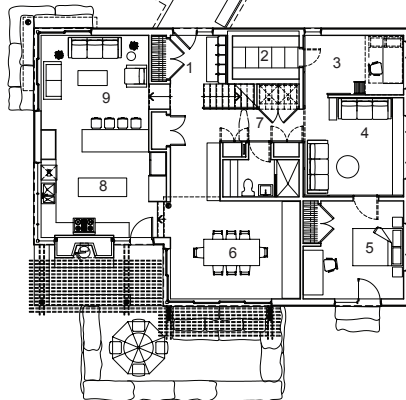


# River House Norval, ON



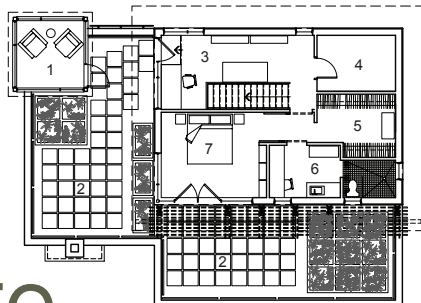
## GROUND FLOOR:

- 1 ENTRY
- 2 WINE CELLAR
- 3 OFFICE
- 4 MEDIA ROOM
- 5 BEDROOM
- 6 DINING ROOM
- 7 LAUNDRY
- 8 KITCHEN
- 9 LIVING ROOM



## SECOND FLOOR:

- 1 SCREENED PORCH
- 2 ROOF TOP GARDEN
- 3 STUDIO
- 4 UTILITY / STORAGE
- 5 WALK IN CLOSET
- 6 MASTER ENSUITE
- 7 MASTER BEDROOM



This site is located on a flood plain of the meandering Credit River. The clients' desire to build a sustainable home on the footprint of a century old renovated cottage ensured that a visual connection to the Credit River was maintained. Developed in conjunction with The Holmes Group, this sustainable house incorporates PV panels, passive cooling, recycled & reclaimed building materials and rugged local finishes reflecting the natural surroundings.

<b>AREA</b>	2,416 sf
<b>BUDGET</b>	\$600,000
<b>STATUS</b>	Construction Fall 2011

**LaPointe**

ARCHITECTS

www.lapointe-arch.com

