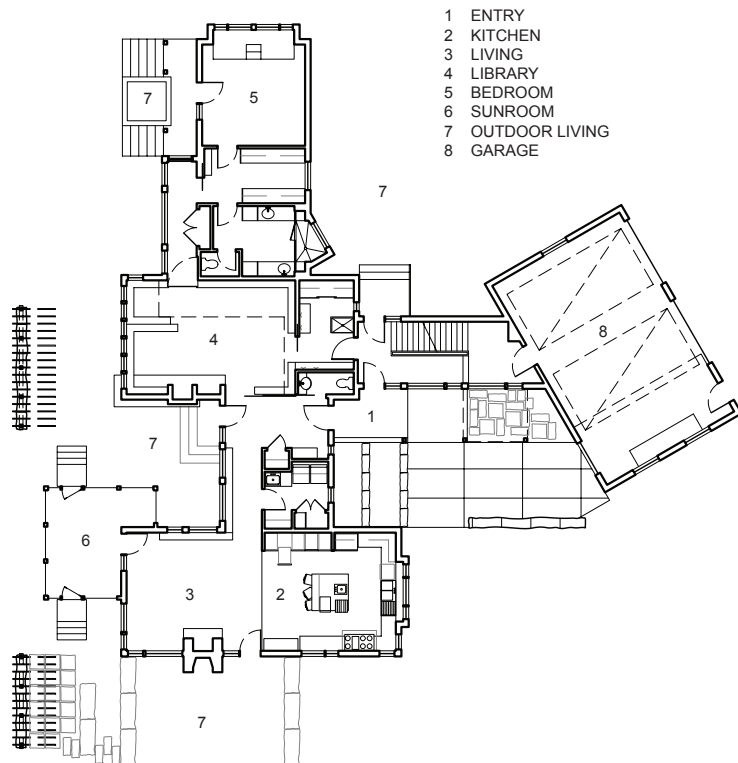
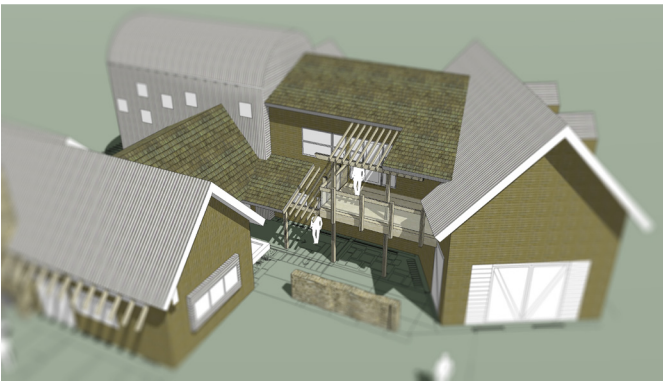


Collection House

Prince Edward County, ON



Situated atop an expansive vineyard, this home is conceived as a series of unique programmatic volumes connected by glazed circulation corridors. At the centre of these volumes is a two-storey library boasting an extensive book collection, generous views and quiet work spaces. Between the volumes are small but diverse outdoor living spaces; each offering a range in levels of privacy, framed views, and microclimates.

AREA 3,570 sf
BUDGET Withheld
STATUS On Hold