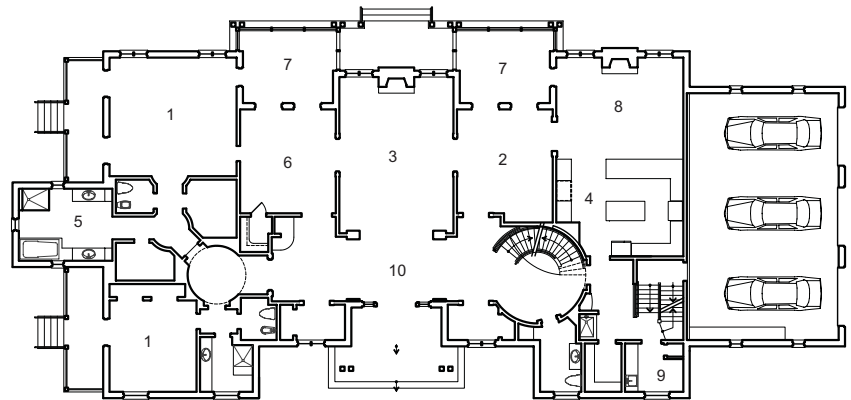
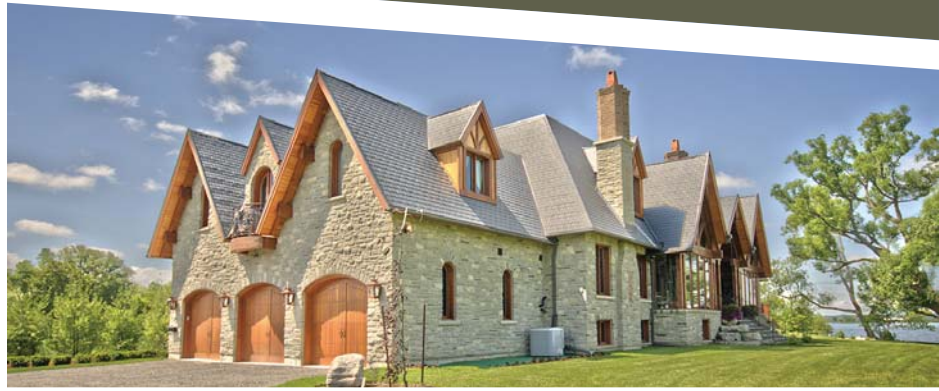


## Simcoe Residence Keswick, ON

Set on a peninsula at the south end of Cook's Bay on Lake Simcoe, this large timber and stone house enjoys views of the Lake on three sides, and a historic canal on the south side. Large timber trusses support vaulted ceilings in both the living and great room, each of which is host to a large stone fireplace. The second floor's flexibility can accommodate four future bedrooms, while the upper portion of the garage serves as the maid's quarters.

**AREA** 6, 800 sf  
**BUDGET** Withheld  
**STATUS** Realised 2007



- 1 BEDROOM
- 2 DINING
- 3 LIVING
- 4 KITCHEN
- 5 BATHROOM
- 6 DEN
- 7 SUNROOM
- 8 FAMILY ROOM
- 9 LAUNDRY
- 10 GREAT HALL