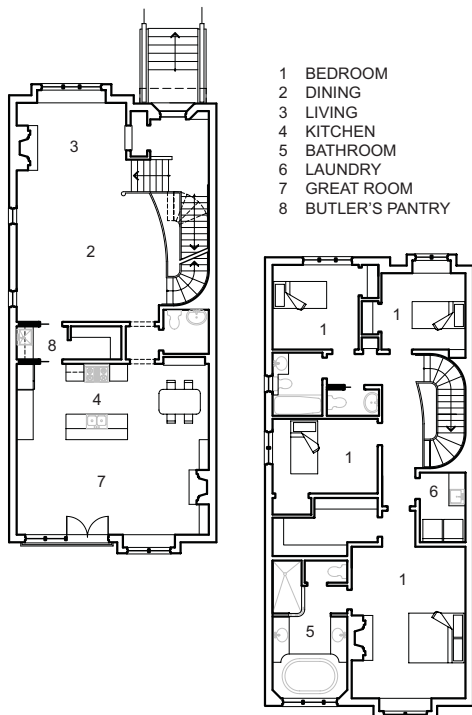


Fairlawn Avenue Residence

Toronto, ON

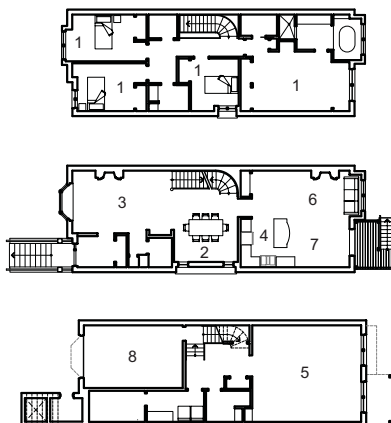
This infill house is clad in red brick typical of the neighbourhood, with a herringbone pattern on the second floor accentuated by mock-Tudor trimming and copper roofing on the lower roofs. The large interior spaces are extensively detailed with heavy moldings and built-in cabinets. The 10-foot ceiling in the basement results in a bright and airy space, and includes a walk-up to the deep back yard.

AREA 2,800 sf
BUDGET Withheld
STATUS Realised 2005



St. Germain Avenue Residences

Toronto, ON



- 1 BEDROOM
- 2 DINING
- 3 LIVING
- 4 KITCHEN
- 5 RECREATION ROOM
- 6 FAMILY ROOM
- 7 BREAKFAST
- 8 GARAGE

These neo-Victorian all-brick infill houses are accented by stucco bays and box windows with metal roofs. The interior of the four-bedroom houses are exquisitely detailed with large wood baseboards offsetting the multi-layered crown molding and half-paneled walls on the ground floor. The basement ceiling is high, allowing plenty of light and air to penetrate deep into the space, while the second floor bedrooms include vaulted ceilings and dormers.

AREA 2,280 sf each
BUDGET Withheld
STATUS Realised 2007