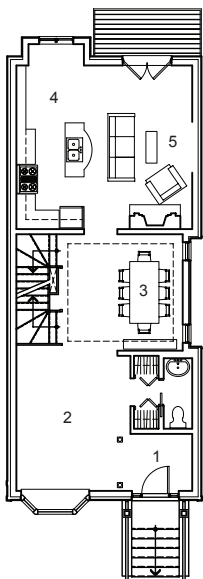
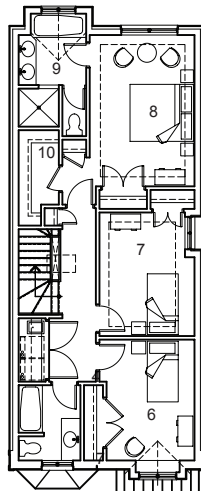


Walder Avenue House Toronto, ON

Mount Pleasant East



- 1 ENTRY
- 2 LIVING
- 3 DINING
- 4 KITCHEN
- 5 GREAT ROOM
- 6 BEDROOM
- 7 BEDROOM
- 8 MASTER BEDROOM
- 9 ENSUITE
- 10 WALK-IN-CLOSET



This 3 bedroom infill house set on a steeply sloping street replaces a circa 1950's war house typical of Central Toronto neighborhoods. Red brick and copper dormers reflect the traditional Victorian aesthetics while a contemporary interior reveals an open concept plan with built-in stainless steel appliances, a double-sided fireplace and coffered ceilings in the bedrooms.

AREA 2,336 sf
BUDGET Withheld
STATUS Completed 2010